

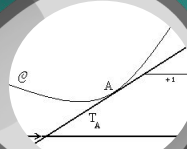
# Maths KS4 Learning Journey 24/25



**Coordinate geometry**  
Vectors, transformations  
and constructions



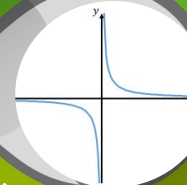
**Functions**  
Composite and inverse  
functions, solving equations  
graphically



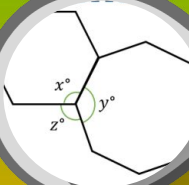
**Geometry**  
Trigonometry, volume  
and surface area



**Algebraic reasoning**  
Proof, gradients and lines;  
non-linear graphs

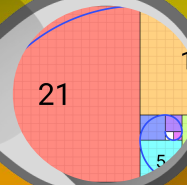


**Angles and shape**  
Angles, congruence,  
similarity and enlargement

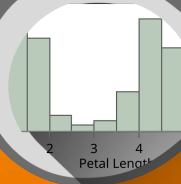


## Y11

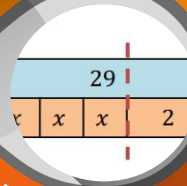
**Algebra**  
Sequences, quadratics,  
simultaneous equations,  
formulae



**Statistics**  
Collecting, representing and  
interpreting data; probability



**Developing Algebra**  
Manipulating expressions,  
solving equations, linear  
inequalities



**Fractions, ratio, proportion**  
Ratios and fractions;  
percentages and interest;  
multiplicative reasoning



**Using Number**  
Non-calculator methods;  
types of number and  
sequences; indices and roots



## Y10